

Civil 3D - Quickly Generate Parcel Closure Reports from Prospector

Published Date: 02-15-2010

Applies to: Civil 3D 2010

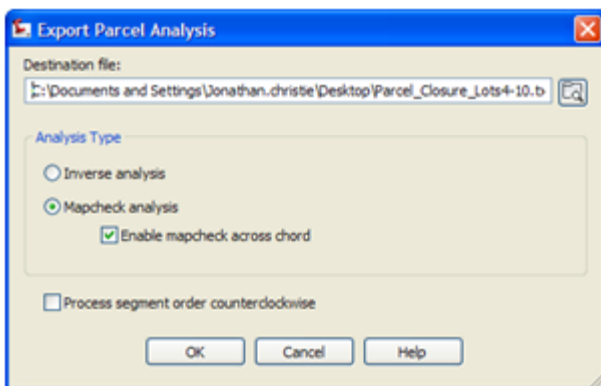
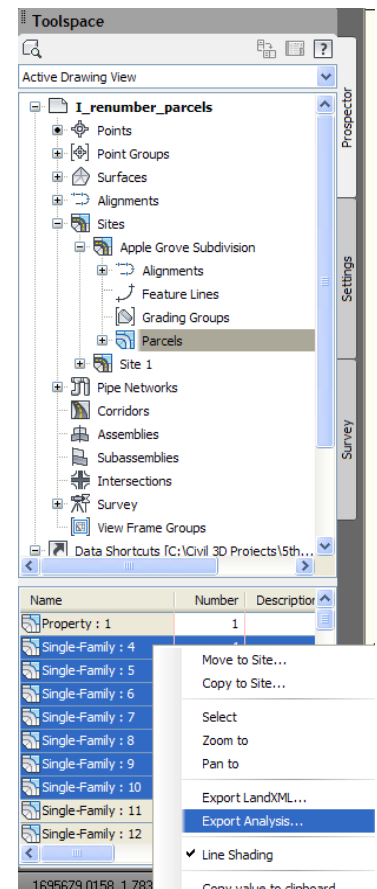
Challenge

You want to quickly create closure reports for a number of parcels, but prefer not to calculate these one at a time through Parcel Properties, or via the Reporting tools.

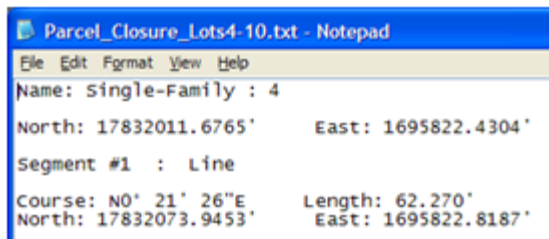
Solution

Since you are using the Prospector tab to access your design data, go to the site where your parcels are stored, select the “Parcels” heading, and then look down to the Item View at the bottom of the Toolspace palette.

Here you will see a list of the Parcels in the current site; you may now select any parcels for which you would like to see a Closure Report. Hold down Ctrl and click on additional parcels to select multiple properties to report on. Then with the desired parcels selected, right-click and choose Export Analysis.



In the dialog box that opens, point to a destination file, a text file saved in a recognizable location. Then choose either “Inverse analysis” or “Mapcheck” analysis and click OK.



The report that was just created will automatically open for you to review the results of this analysis.

For more technical solutions visit www.ketivtech.com/support